

# Fèis time

## ACTIVITY SHEET

### Sawney Bean

#### Lyrics

Go ye not by Gallowa, come bide a while, my frein,  
I'll tell ye o the dangers there. Beware o Sawney Bean.

Ther's nae body kens that he bides there for his face is seldom seen.  
But tae meet his eye is tae meet your fate at the hands o Sawney Bean.

For Sawney he has taen a wife and he's hungry bairns tae wean  
And he's raised them up on the flesh o men in the cave o Sawney Bean.

An Sawney's sons are young an strong and their blades are sharp and keen.  
Tae spill the blood o travellers wha meet wi Sawney Bean.

So if you ride frae there tae here, be ye wary in between  
Lest they catch your horse and spill your blood in the cave o Sawney Bean.

They'll hing ye ap an cut yet throat an they'll pick yer carcass clean  
An they'll yase yer banes tae quiet the weans in the cave o Sawney Bean.

But fear ye not, oor Captain rides on an errand o the Queen  
And he carries the writ of fire and sword for the head o Sawney Bean.

They've hung them high in Edinburgh toon an likewise a their kin  
An the wind blaws cauld on a their banes an tae hell they a hae gaen.

## Activity 1

A gruesome tale of the fabled family of cannibals who lived in a cave near Girvan. Write your own gruesome tale set in your own local area!



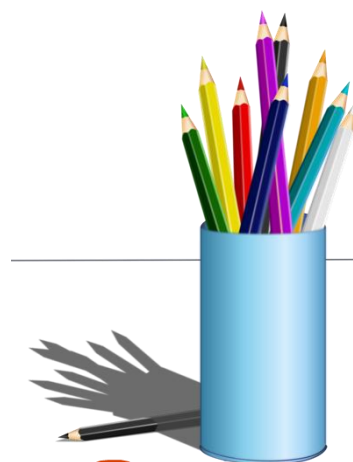
## Activity 2

Sawney Bean is said to have lived in a cave. Draw a picture of Sawney Bean's cave. What do you think it looked like when he lived there?



## Activity 3

In your picture of Sawney Bean's cave, can you draw Sawney Bean? How do you think he looked?



## Activity 4

Do you know any stories or legends from your local area?

