

Fèis time

ACTIVITY SHEET

FLOODGARRY

Written by George Weir

Lyrics

**Green is Flodgarry
Blue is the sea
Born here the lassie
Tae guide oor prince free**

Westward the wild wind, high runs the sea
Heaving the shallop by Broad Lea Eig bay
I have but one love, lass trim the sail
Ruin behind us, loyalty as well.

**Green is Flodgarry
Blue is the sea
Born here the lassie
Tae guide oor prince free**

Come ye young Raasay, hold fast the helm
The long ship is heavin' by Loch Scavaig Bay
Come wi' me lassie turn ye not hame
Come where the west wind is kind tae its ain

**Green is Flodgarry
Blue is the sea
Born here the lassie
Tae guide oor prince free**

Pull hard ma heroes the eagle tae flee
Doon by Loch Yuma the tall ship runs free
Flora was taken, doon by Portree
Bound the tower and maybe tae dee

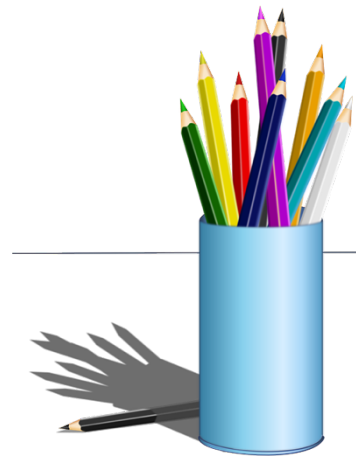
Activity 1

Find Flodigarry on a map and have a look at how you could get there from where you live.



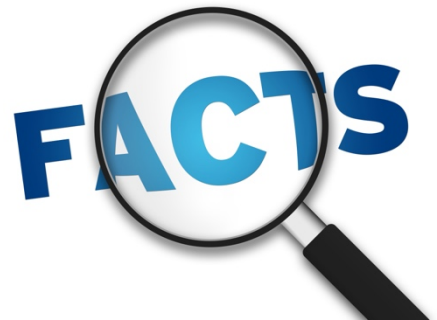
Activity 2

Draw a picture of Bonnie Prince Charlie escaping Scotland by boat.



Activity 3

Find out 5 facts about Bonnie Prince Charlie.



Activity 4

Write a poem about people who are forced to leave their homes and move to a new country.

